



Quick Start

This *Quick Start* describes system requirements for Webroot® Window Washer® and provides instructions for either a typical or custom installation.

If you are upgrading from a previous version of Window Washer, you do *not* need to uninstall the old version first. Installing the new version over the old one lets you automatically retain your Window Washer settings.

To install and start Window Washer, see the following topics:

- [Reviewing system requirements](#)
- [Installing Window Washer](#)
- [Starting and running Window Washer](#)

Reviewing system requirements

Before you install and run Window Washer, make sure your computer meets the following requirements:

- Operating systems: Windows® XP (Professional, Home, Media Center, or Tablet), Windows Vista™ (Home Basic, Home Premium, Business, or Ultimate), or Windows 7 (Starter, Home Premium, Professional, or Ultimate)
- Processor: 266 MHz
- Hard drive space: 5 megabytes
- RAM: 64 megabytes
- Internet Explorer 6 (or higher) or Firefox 2 (or higher), for tasks that require linking to the Webroot Web site, such as checking for product updates.

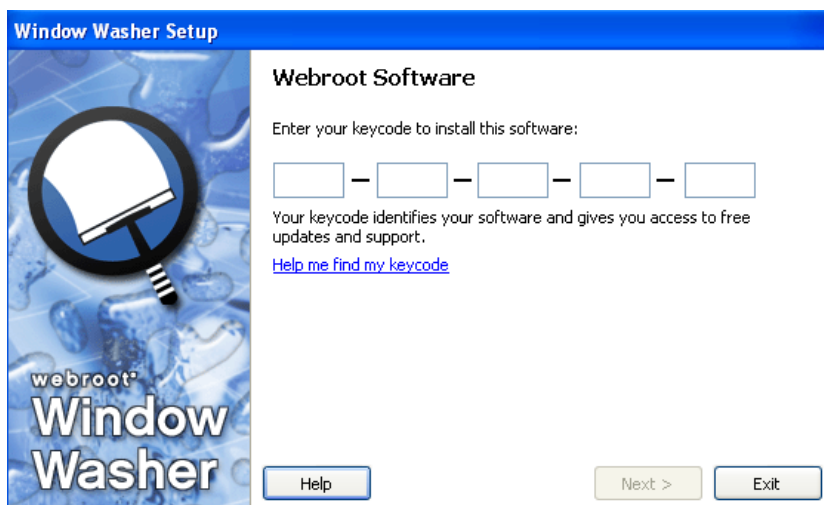
Installing Window Washer

Depending on how you purchased Window Washer, you may need to install it from a CD or from a file downloaded from the Webroot Web site.

To install Window Washer:

1. Close all other programs that you have open on your computer.
2. Start the installation program either from a CD or from a file downloaded from our Web site. If you purchased the software on a CD, insert the CD into a drive and follow the on-screen instructions to begin. If you downloaded the file, double-click on the file name to begin.

The installation window opens.



3. Enter your keycode and click the **Next** button. (Your keycode comes in an email message or is listed on the CD sleeve.)

The License Agreement and Disclaimer window opens.

4. Read the license agreement and click the **I Agree** button.

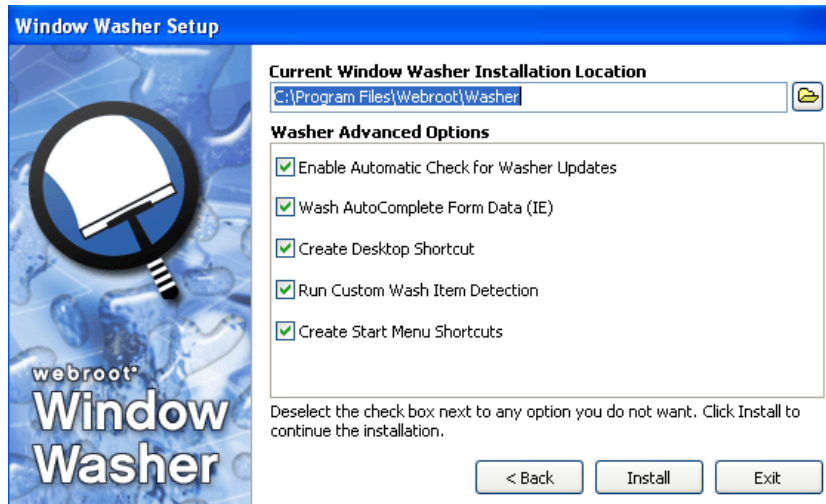
The Choose Your Installation Type window opens and shows two options: typical or custom.

We recommend that you select Typical Installation, which defaults to the most common settings. If you want to see what settings can be changed in a Custom Installation, see the following table.

Custom Setting	Description
Installation Location	If desired, you can enter a different location from the default: C:\Program Files\Webroot\Washer.
Enable Automatic Check for Washer Updates	This option enables Window Washer to periodically check for new versions of the software when your computer is connected to the Internet.
Wash AutoComplete Form Data (IE)	During washes, this option deletes data that Internet Explorer stores when you enter information into fields on Web sites. This is part of Internet Explorer's AutoComplete feature, which predicts a word or phrase based on the characters you begin to type (for example, your email address or password). After installation, you can change this setting in the main interface, under Wash Setup.
Create Desktop Shortcut	This option adds a Window Washer shortcut to your computer desktop. You can then double-click the shortcut icon to start Window Washer.
Run Custom Wash Item Detection	This option checks for common applications that may be installed on your computer, so you can wash traces of activity left by those applications (for example, RealPlayer, Photoshop, and Paint Shop Pro). Window Washer includes Custom Wash items for many of these applications.
Create Start Menu Shortcuts	This option adds Window Washer to your Start menu.

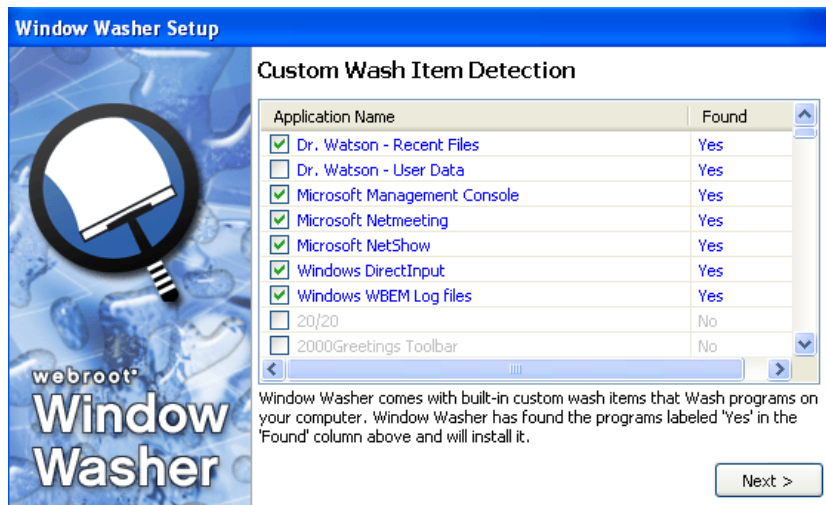
5. If you want the Typical Installation option (recommended), click **Next**. The Installation Status window opens, showing the progress of the installation.

If you want the Custom Installation option, select its radio button and click **Next**. The next installation window opens, as shown below. Make your desired changes (see the previous table), then click **Install**. The Installation Status window opens, showing the installation progress.



6. When the installation is complete, click **Next**.

The Custom Wash Item Detection window opens. This window shows which programs you have installed that have a corresponding Custom Wash item, which allows you to wash traces of activity for some popular programs, such as Photoshop. The checkmark next to the program shows that Window Washer will activate the Custom Wash item automatically.



7. To determine what Window Washer removes for these programs, move your mouse cursor over the Custom Wash item name for a pop-up description. If you do *not* want these programs washed, deselect them by clicking in checkboxes so that no checkmark appears, then click **Next**. If desired, you can change these selections again later in the main interface in the Wash Setup panel.

When the installation completes, the Successful Installation window opens. We recommend that you leave the **Run Window Washer** checkbox selected, so Window Washer can run in the background and perform automatic washes (if you decide to create wash schedules).

8. Click **Finished**.

Starting and running Window Washer

If you kept the **Run Window Washer** checkbox selected on the last installation screen, Window Washer will always run automatically when Windows starts. To check that Window Washer is running, look for the Window Washer icon in the Windows system tray in the lower-right corner of your screen.



To open the main interface (and manually start Window Washer, if necessary), do one of the following:

- Double-click the Window Washer icon in the system tray or right-click the icon and select **Restore** from the pop-up menu.
- Double-click the Window Washer icon on your Windows desktop or click the Windows **Start** menu and select **All Programs > Webroot > Window Washer > Window Washer**.

When the main interface opens (as shown below), you can click the **Help** button to open the online instructions.

